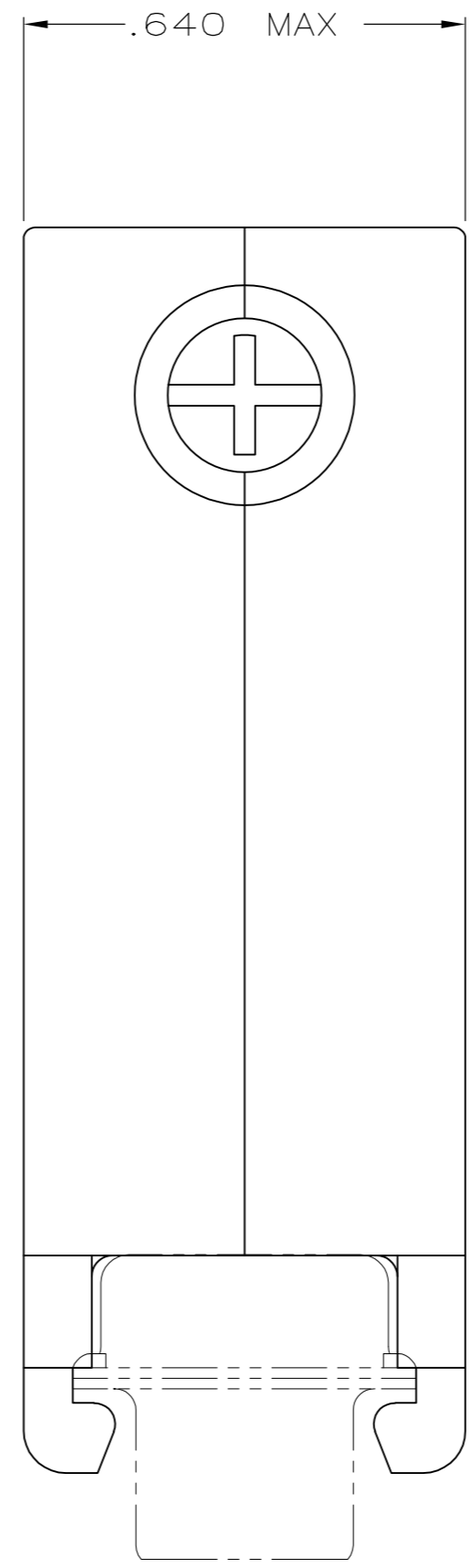
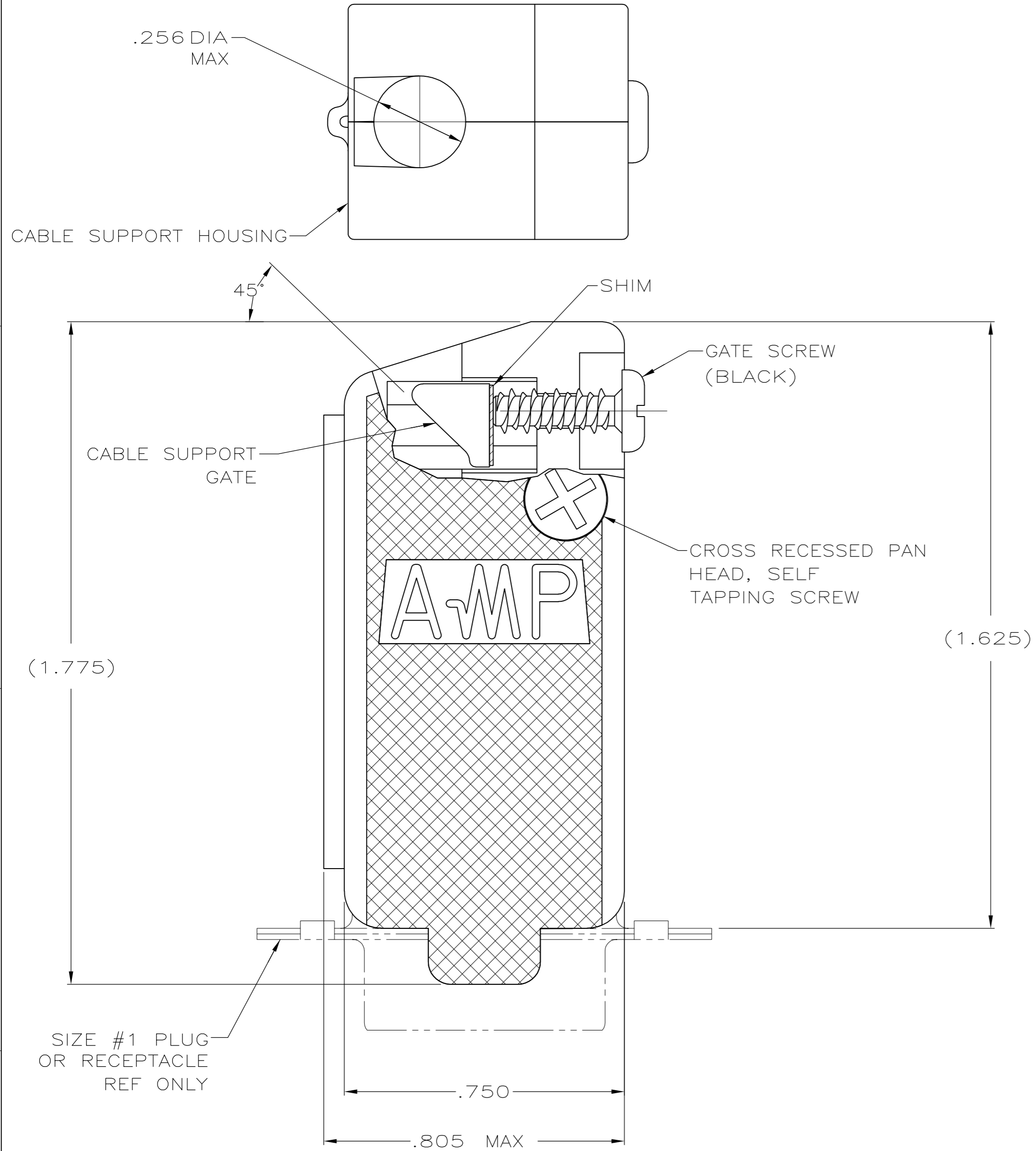


THIS DRAWING IS UNPUBLISHED. RELEASED FOR PUBLICATION
 © COPYRIGHT 2006 By - ALL RIGHTS RESERVED.

LOC	DIST	REVISIONS			
P	LTR	DESCRIPTION	DATE	DWN	APVD
GP	00				
P		REVISED PER ECO-11-004835	11MAR11	RK	HMR



SIZE #1 PLUG OR RECEPTACLE REF ONLY

- 1. PARTS PACKAGED UNASSEMBLED.
- 2 COMPONENTS INDIVIDUALLY BULK PACKED & SHIPPED AS A UNIT PACKAGE KIT.
- 3 MOLDED PARTS: POLYPROPYLENE, BLACK
SHIM: BRASS
SCREWS: COLD ROLLED STEEL
- 4 GATE SCREWS: BLACK ZINC PHOSPHATE, SELF-TAPPING SCREWS: ZINC PLATED CLEAR CHROMATE COATING.

COMBINATION DRIVE	2	5205729-3
COMBINATION DRIVE	AS SHOWN	5205729-1
SCREW VERSION	PACKAGING	PART NUMBER

THIS DRAWING IS A CONTROLLED DOCUMENT.		DWN R.RICHARDSON 22AUG05		
DIMENSIONS: INCHES		CHK C. ROHDE 22AUG 05		
TOLERANCES UNLESS OTHERWISE SPECIFIED:		APVD M.WALMSLEY 22AUG05	NAME	
0 PLC ± -		PRODUCT SPEC	SELF TAPPED 45/180 DEG	
1 PLC ± -		APPLICATION SPEC	CABLE SUPPORT CLAMSHELL, SIZE 1	
2 PLC ± -		WEIGHT -	ASSEMBLY, AMPLIMITE HD-20	
3 PLC ± .005		SIZE A2	CAGE CODE 00779	DRAWING NO C=5205729
4 PLC ± -		CUSTOMER DRAWING	SCALE 4:1	SHEET 1 of 1
ANGLES ± -				REV P
FINISH 4				